

GEOGRAPHICAL INDICATIONS FOR CRAFT AND INDUSTRIAL PRODUCTS

Lorena Martínez, Legal Department, EUIPO
16/04/2024

STATE OF PLAY

CRAFT



AGRI



STATE OF PLAY

CRAFT



AGRI



LEGAL FRAMEWORK



CRAFT AND INDUSTRIAL PRODUCTS

Regulation (EU) 2023/2411



AGRICULTURAL PRODUCTS AND FOODSTUFFS

Regulation (EU) No 1151/2012



WINES

Regulation (EU) No 1308/2013



SPIRIT DRINKS

Regulation (EU) 2019/787





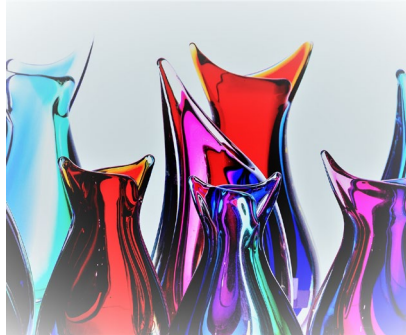
CI GI SCHEME

WHAT IS A GEOGRAPHICAL INDICATION?



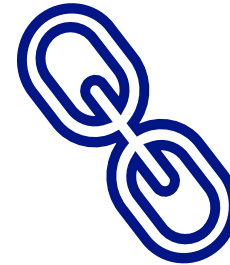
Geographical area

+



Product
Quality & reputation

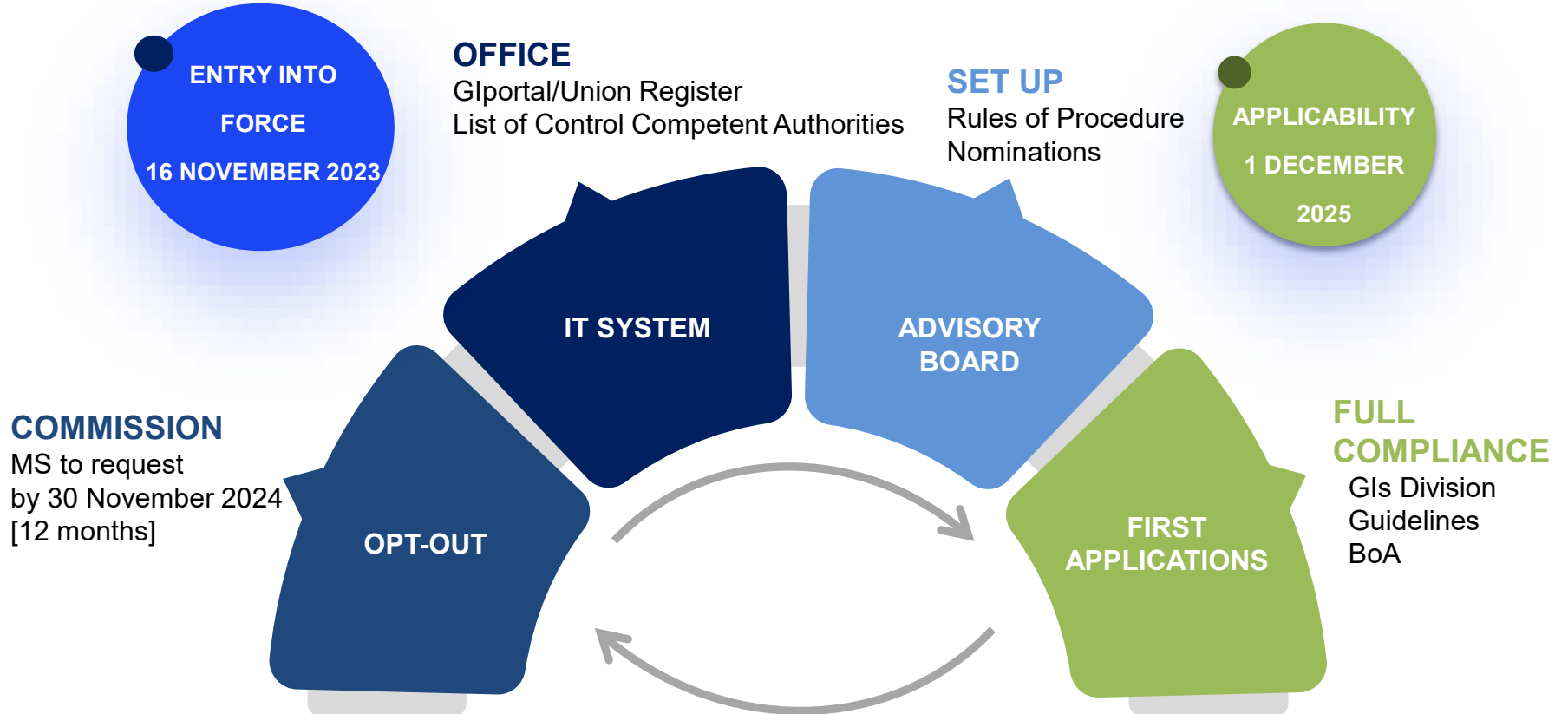
+



Link

=





MAIN TASKS OF THE EUIPO AS 'EU COMPETENT AUTHORITY'

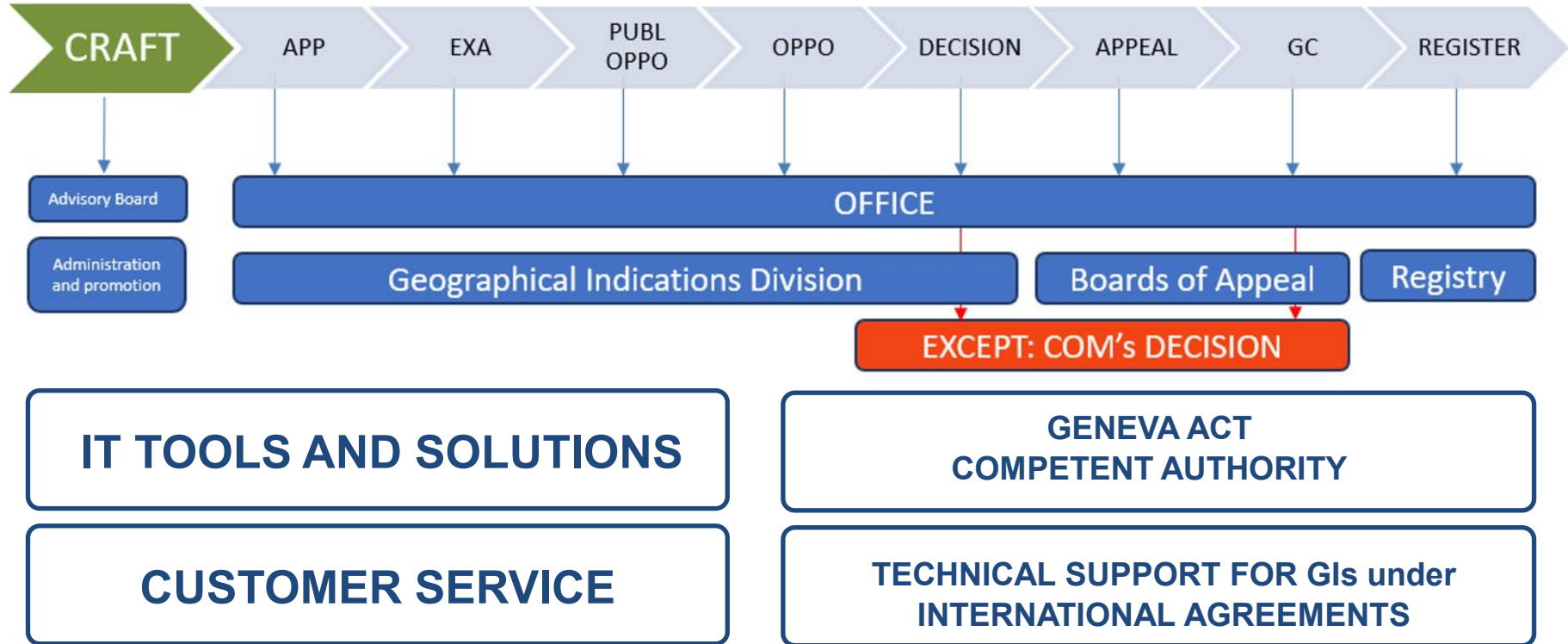


UNION LEVEL ASSESSMENT

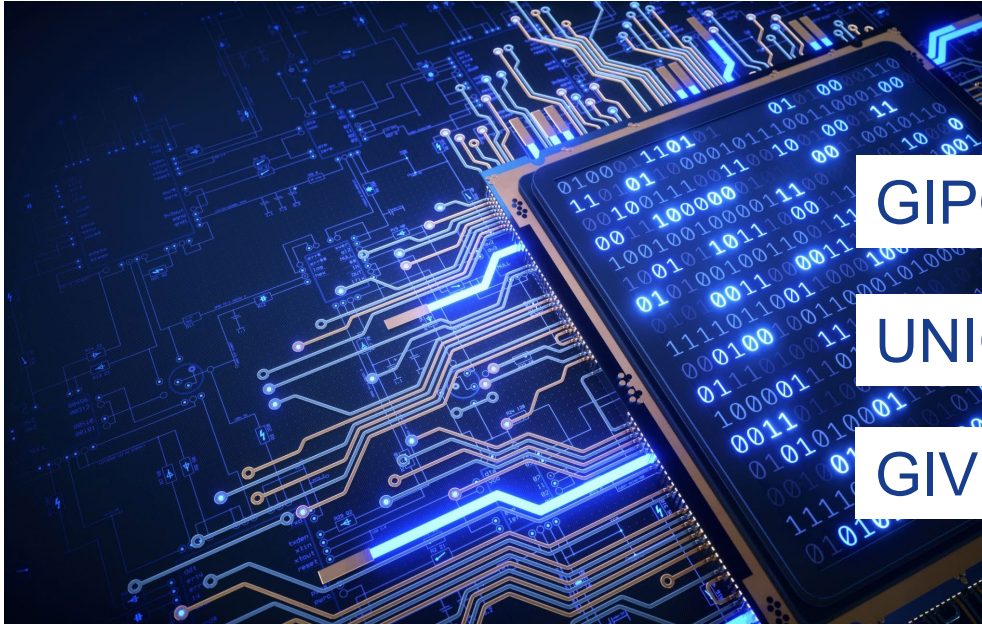
UNION REGISTER

COMPETENT AUTHORITY
(GENEVA ACT)

EUIPO'S FUTURE SERVICE



OFFICE DIGITAL SYSTEM



GIPORTAL – e-filing system

UNION REGISTER

GIVIEW – Database

GIPORTAL



Digital System



24 EU
languages



Accessible to
the public



GI e-filing



Forms
available



Available to MS



GI UNION REGISTER



Established
and maintained
by the Office



Accessible to
the public



Public
information



Protected GI



Type of product



Name of applicant



Decision



Country / countries
of origin of the product



TYPES OF PROCEDURES



Standard

Product specification (PS)
reference

Single document (SD)

Accompanying documentation

*Declaration by MS competent
authority*



Direct

Product specification (PS)

Single document (SD)

Accompanying documentation

*MS Declaration via single point
of contact*



3C

Product specification (PS)

Single document (SD)

Accompanying documentation

Legal proof of protection

*Power of attorney, where
applicable*

Welcome to our new website. Help us to improve it by giving us feedback.

Geographical Indications



[Geographical Indications](#) > [GI protection for craft and industrial products](#)



GIs for craft and industrial products

What is a craft or industrial product?

According to the law, **'craft products'** are those **produced either entirely by hand, or** with the aid of manual or digital tools, or by mechanical means, whenever **the manual contribution is an important component** of the finished product. On the other hand, **'industrial products'** are those produced in a standardised way, including serial production and the use of machines.

In practice, this means that a huge range of products could benefit from geographical indication protection: natural stones, woodwork, jewellery, textiles, lace, cutlery, glass, porcelain, hides and skins, etc.

It is important, however, that products meet the following criteria:

- The product must originate in a specific place, region or country;



www.euipo.europa.eu



[@EU_IPO](https://twitter.com/EU_IPO)



[EUIPO](https://www.linkedin.com/company/euipo)



[EUIPO.EU](https://www.facebook.com/EUIPO.EU)



[@EUIPO](https://www.instagram.com/EUIPO)



[EUIPO](https://www.youtube.com/EUIPO)

THANK YOU